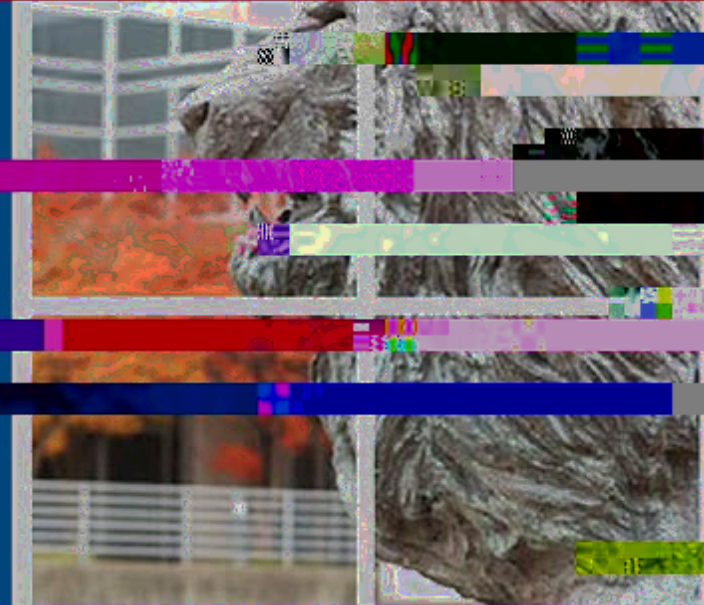




OLD DOMINION
UNIVERSITY

IDEA FUSION



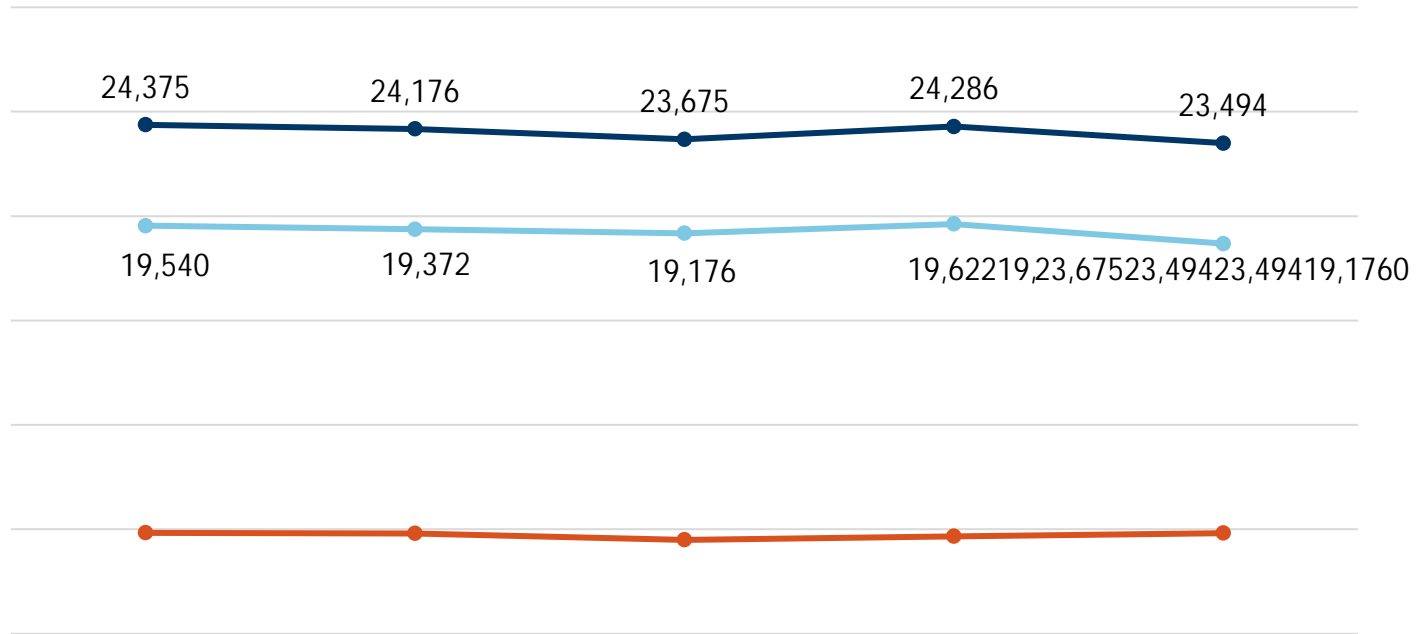
Board of Visitors Dashboard

December 10, 2021



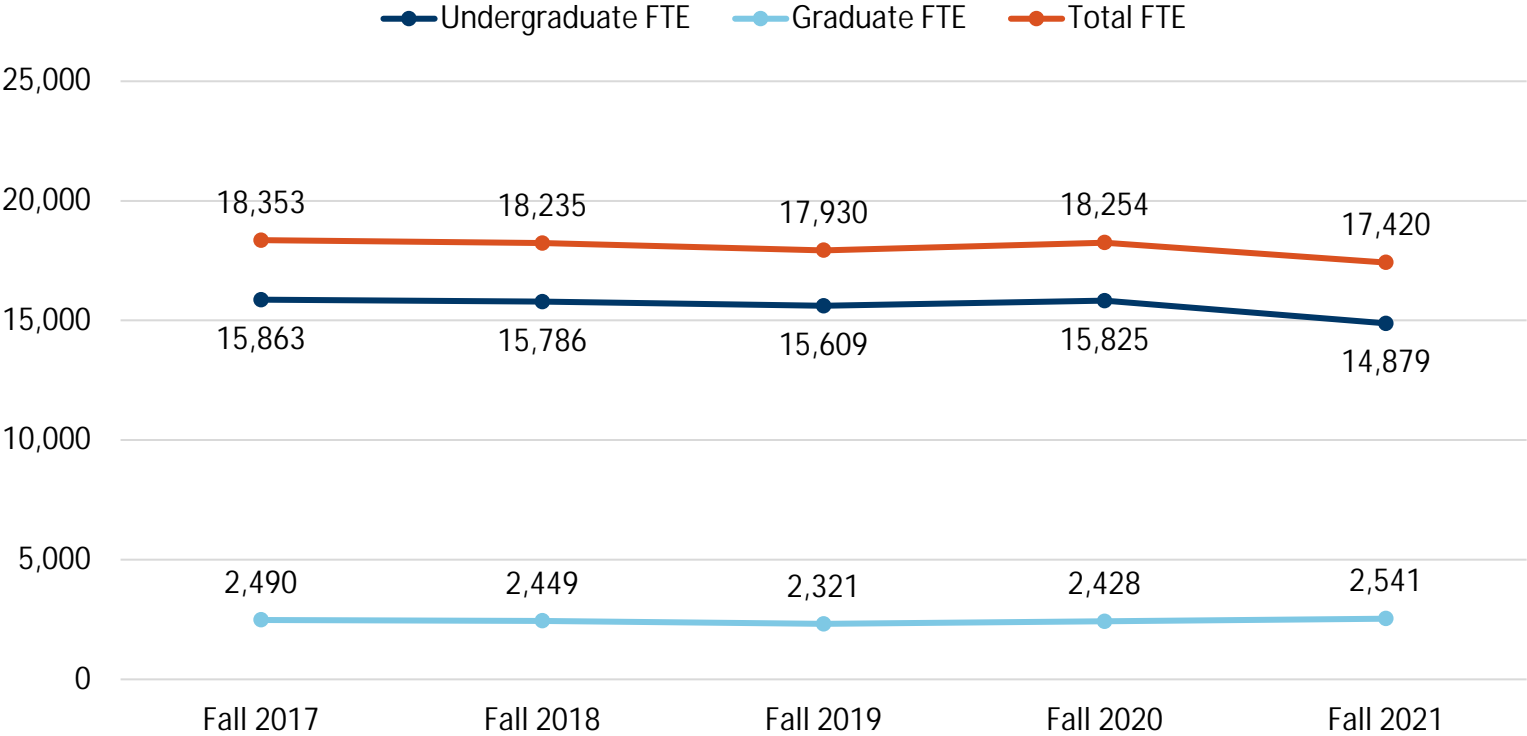
Headcount

By Level



Full-Time Equivalent (FTE)

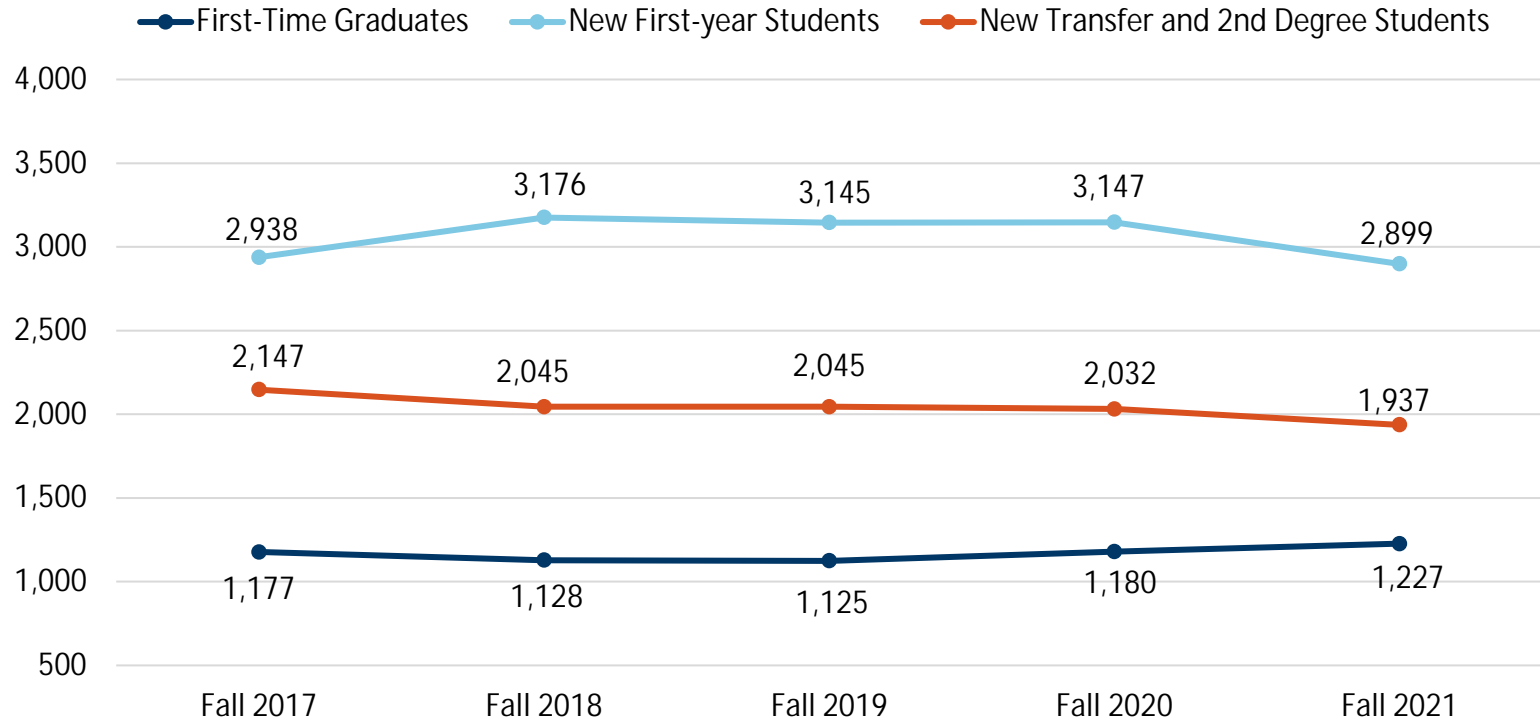
By Level



Note: Fall FTE represents *student* FTE as of institutional census.

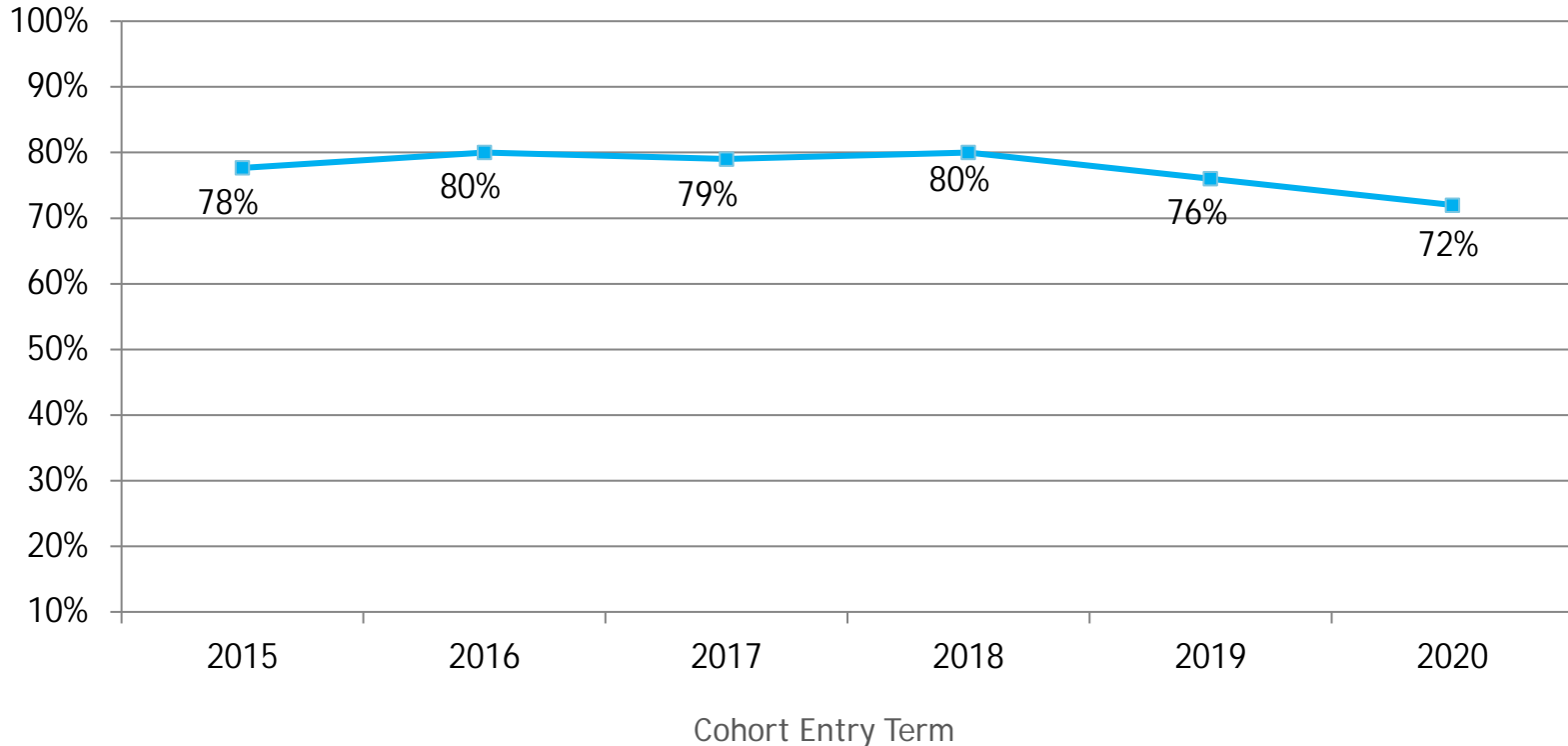
Source: Office of Institutional Research

New Students



Freshman Retention

By Year of Entry



Source: Office of Institutional Research



Notes: First-time, full-time, degree-seeking students – first-to-second year (fall-to-fall) persistence

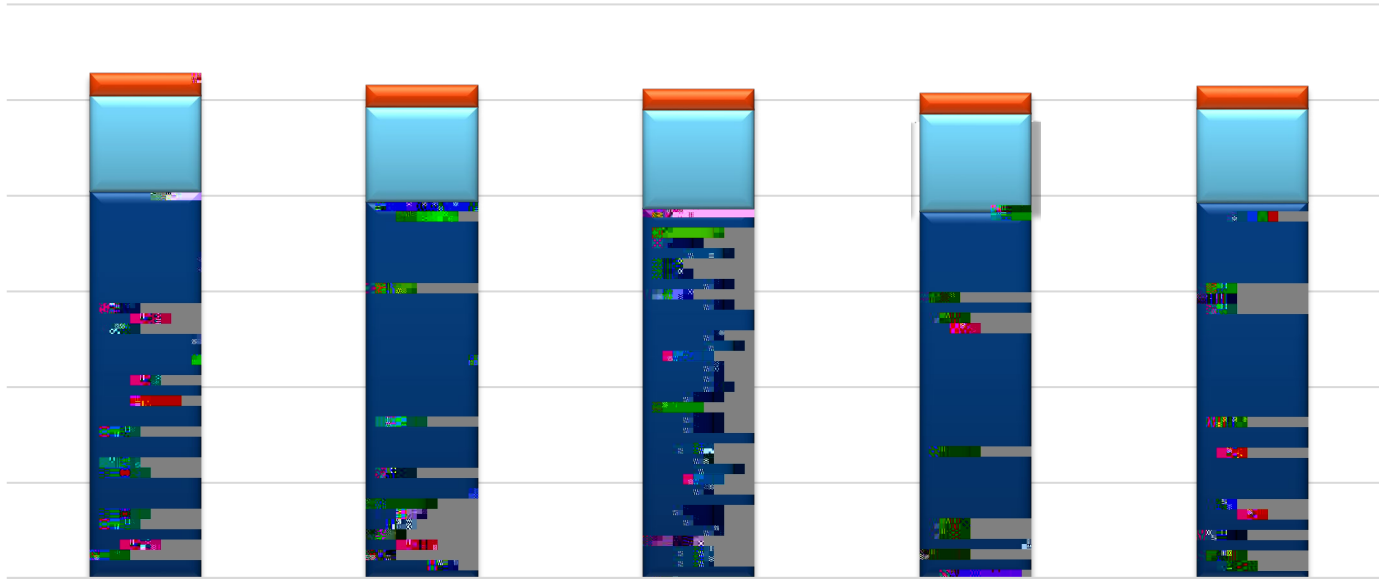
Six-Year Graduation Rate

By Year of Entry



Total Degrees Conferred

By Level



Degrees Awarded in STEM-H

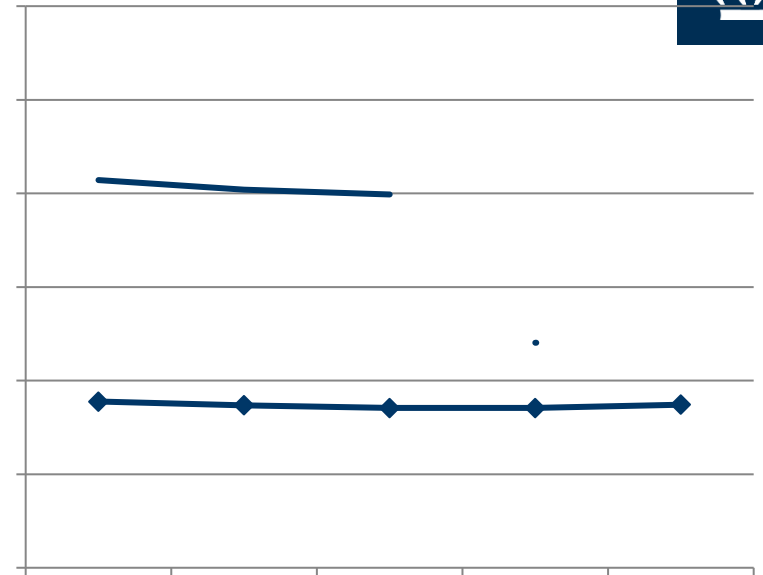
Science, Technology, Engineering, Math, and Health Professions

Virginia Public Doctoral-Granting Institutions

STEM-H Degrees as % of Total Bachelor's Degrees Awarded 2020-21

Old Dominion University

Total Bachelor Degree Awards





Operating Budget Changes

As of November 1, 2021



Current Operating Funds

Cumulative Revenue and Expenditures
as of November 1, 2021



Notes: Educational and General: All operations related to the educational objectives of the institution and are

SWaM Performance

Measured as a Percent of Discretionary Spend



Notes: Under the Virginia Higher Education Restructuring Act in 2009, institutions were required to receive Board of Visitors approval of original expenditure goals with Small, Woman-Owned and Minority (SWaM) businesses as a prerequisite to attain the initial Level II Authority.

The SWaM goals for FY21: Micro 1%, Minority-owned businesses 7%, Woman-owned businesses 6.5%, Small businesses 33%, and TPa 47.1 (s)4.4



Jeanne Clery Disclosure

- Postsecondary institutions that participate in Federal Financial Aid programs are required to maintain and publish crime statistics, fire statistics, publish an Annual Security Report, and notify the campus community when needed as delineated by the *Jeanne Clery Disclosure of Campus Security Policy and Campus Crime Statistics Act (Clery Act)*.
- The location; whether on campus, in a residence hall, on non campus property, or on public property (i.e. sidewalks, parks, streets, etc.) must be properly defined. Additionally, the type of crime must be properly labeled to coincide with Clery crime definitions.
- Clery definitions may vary from the Virginia Criminal Code; therefore, the statistics provided for Clery compliance may vary from the University's statistics for the Uniform Crime Report which is submitted yearly to the Virginia State Police.







Old Dominion University

Research and Sponsored Program Expenditures in





Fundraising Progress FYTD 2020 to 2022

